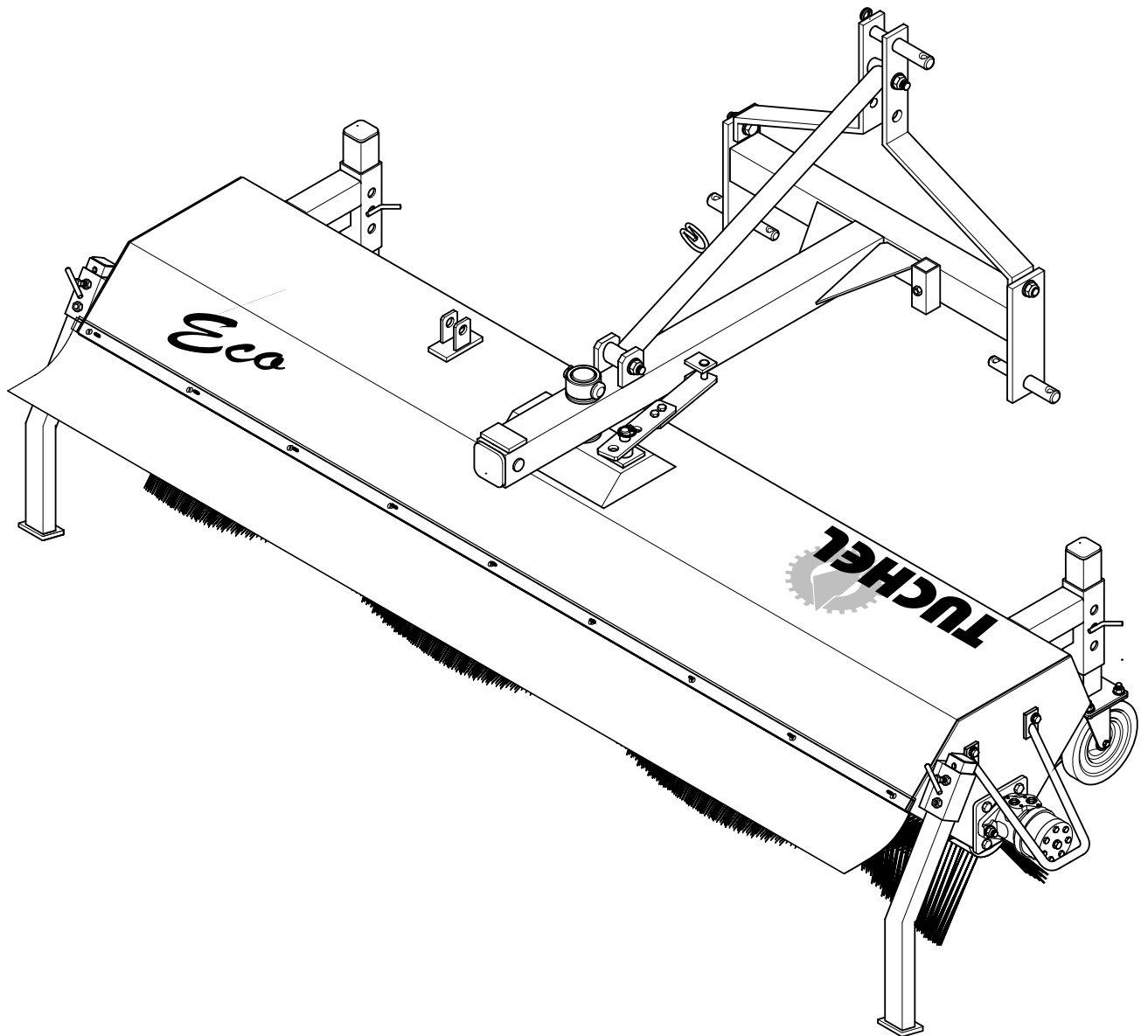




Parts Catalogue



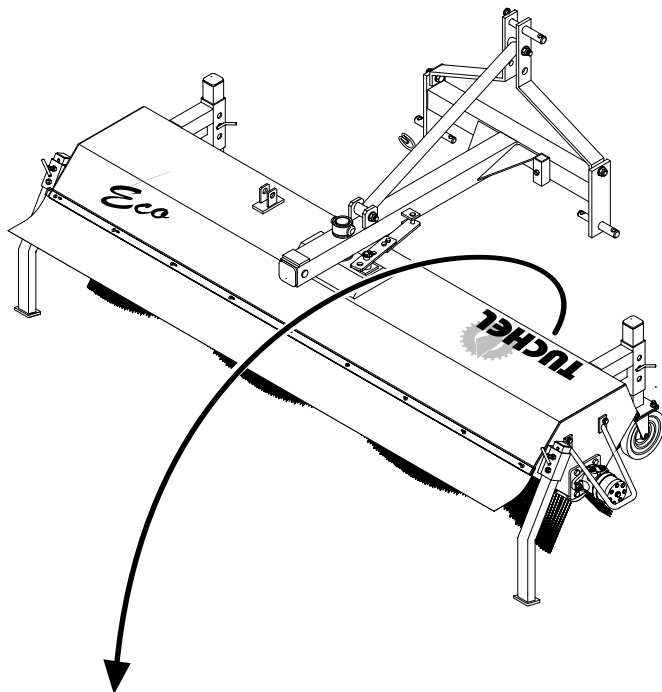
Eco - Sweeper



Index

Labelling	3
Specifications for enquiries and orders	3
Tafel 001 Frame & Wheels	4
Tafel 001 Frame & Wheels	6
Tafel 001 Frame & Wheels	8
Tafel 002 Broom Assembly	10
Tafel 003 Mounting & Adjustments	12
Tafel 003 Mounting & Adjustments	14
Tafel 004 Collectors and Unloaders.....	16
Tafel 004 Collectors and Unloaders.....	18
Tafel 004 Collectors and Unloaders.....	20
Notes:	22
Notes:	23

Labelling

The labelling takes place via the type label.



○ Modell / TYP	<input type="text"/>	 <p>Holsterfeld 15 • 48499 Salzbergen Tel. (0 59 71) 96 75-0 • Fax 96 75-30 Internet: http://www.tuchel.com E-Mail: info@tuchel.com</p> 
○ Serien-Nr.	<input type="text"/>	
○ Baujahr / Auftrags-Nr.	<input type="text"/>	
○ max. Betriebsdruck [bar]	<input type="text"/>	
○ max. Ölstrom [kg]	<input type="text"/>	
○ Eigengewicht [kg]	<input type="text"/>	
○ Tragfähigkeit des Flurförderfahrzeugs beachten!		

Modell

Serial no.

Year of construction/
order no.

max. oil pressure [bar]

max. oil flow [l/min]

Net weight [kg]

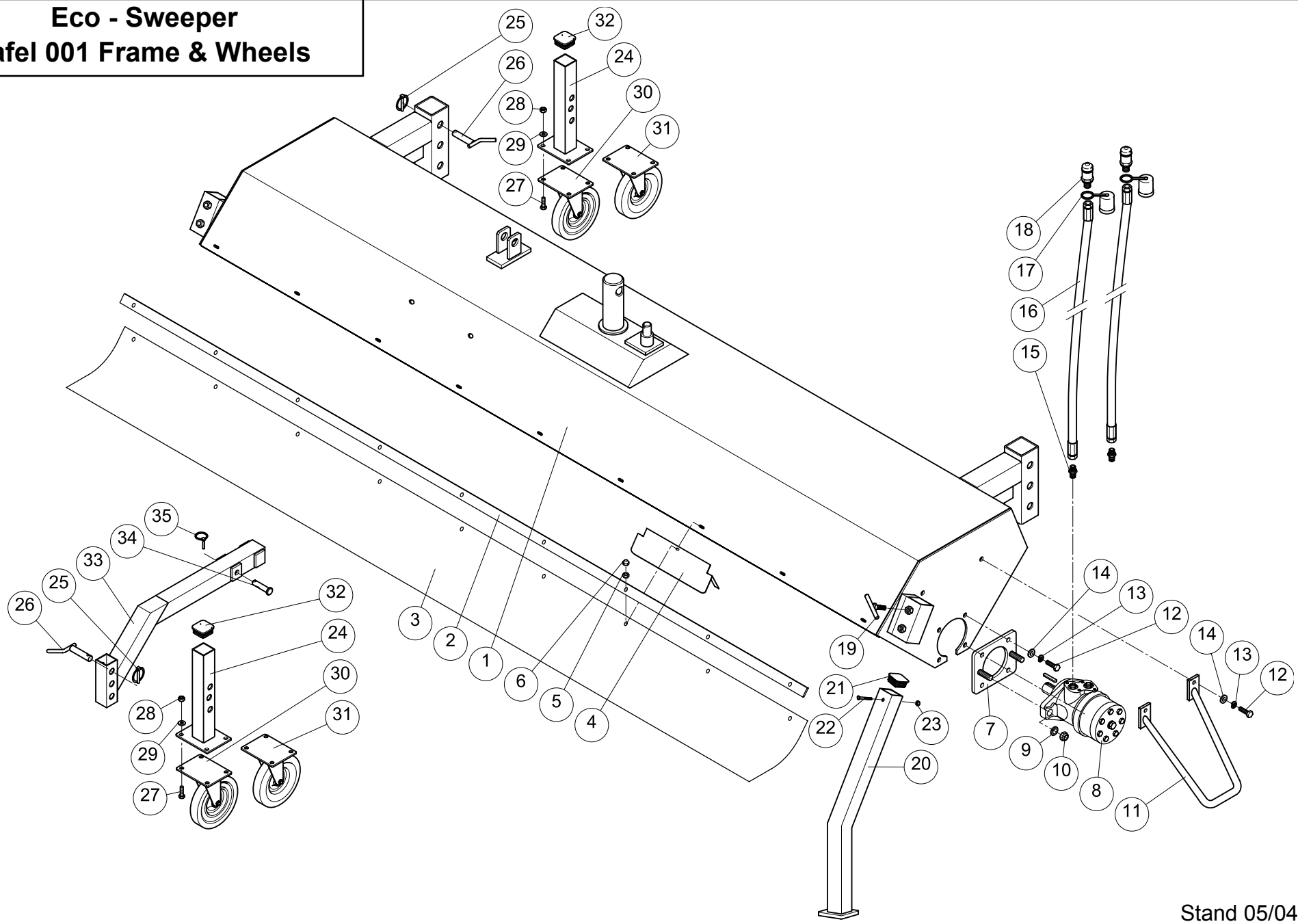
HINWEIS The entire labelling (type label, safety label, etc.) constitutes a certificate and must not be altered or made illegible. It must be replaced if it is damaged or missing.

Specifications for enquiries and orders

When ordering spare parts or accessories, please specify the type label, serial number and the year of construction of the Plus sweeping machine.

HINWEIS The use of accessories or spare parts of other manufacturers is only allowed after consultation with the manufacturer. Original accessories / original spare parts and accessories authorised by the manufacturer provide safety. The use of other accessories / spare parts invalidates the liability for the consequences thereof.

Eco - Sweeper Tafel 001 Frame & Wheels

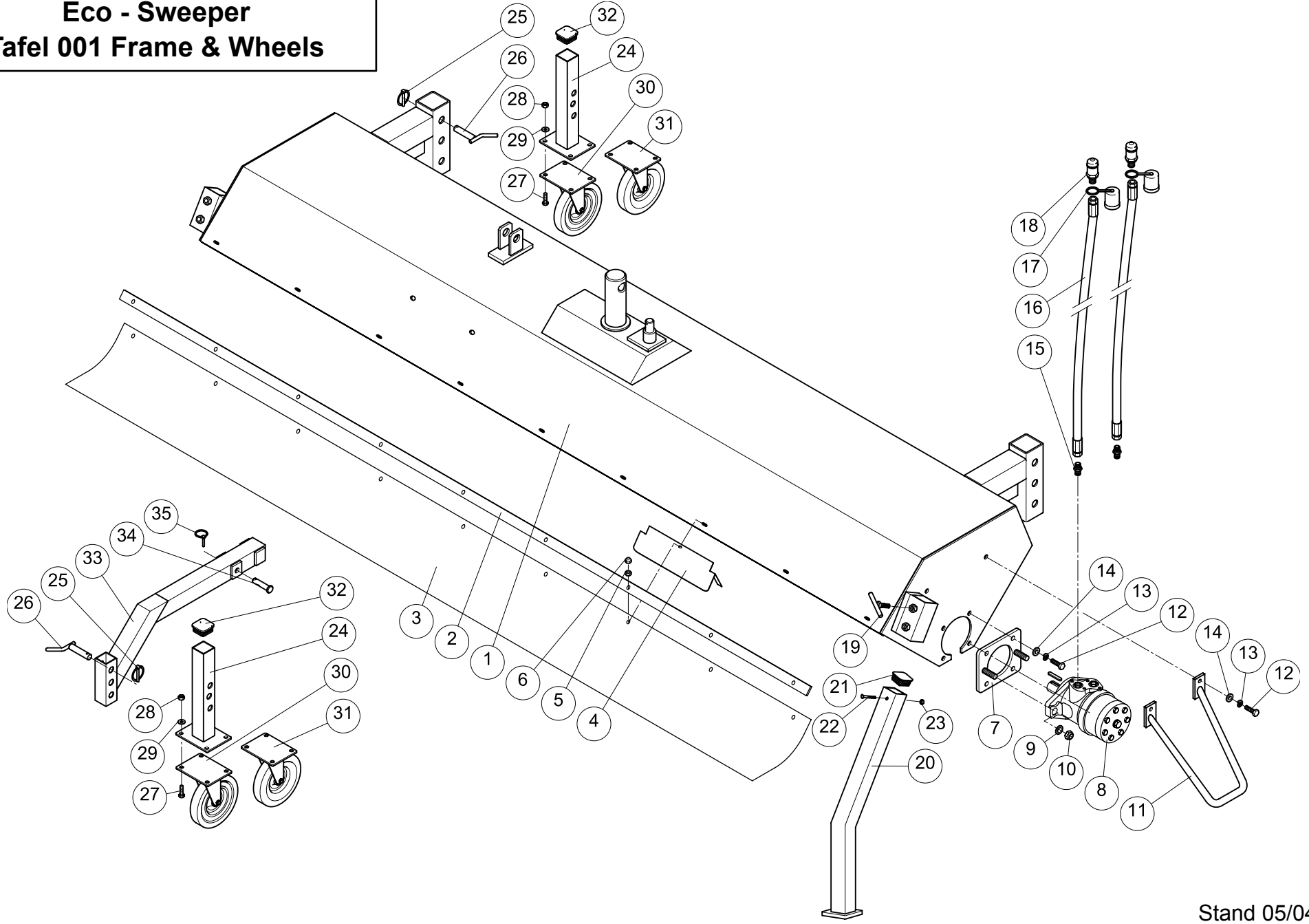


Stand 05/04

Eco Sweeper – Parts Catalogue 001: Frame & Wheels

Item	Part No.	Description	Number
Working Width 1.50m			
1	35.08.B0000	Framework, Complete (35.08.81000)	1
2	92.38.00003	Strip	1
3	00.FI.00033	Rubber Flap (1 Insert)	1
4	38.05.50204	Support Flange (Under Rubber Flap)	3
5	00.AB.00200	Ratchet Nut	9
6	00.FV.00018	Hexagonal Protective Cap	9
Working Width 1.80m			
1	35.08.B0000	Framework, Complete (35.08.B1000)	1
2	92.38.00003	Strip	1
3	00.FI.00033	Rubber Flap (1 Insert)	1
4	38.05.50204	Support Flange Without Fig. (Under Rubber Flap)	3
5	00.AB.00200	Ratchet Nut	9
6	00.FV.00018	Hexagonal Protective Cap	9
Working Width 2.30m			
1	35.08.B0000	Framework, Complete (35.08.B1000)	1
2	92.38.00003	Strip	1
3	00.FI.00033	Rubber Flap (1 Insert)	1
4	38.05.50204	Support Flange Without Fig. (Under Rubber Flap)	4
5	00.AB.00200	Ratchet Nut	9
6	00.FV.00018	Hexagonal Protective Cap	9
Hydraulic Motor			
7	35.08.P1020	Motor Plate	1

Eco - Sweeper Tafel 001 Frame & Wheels

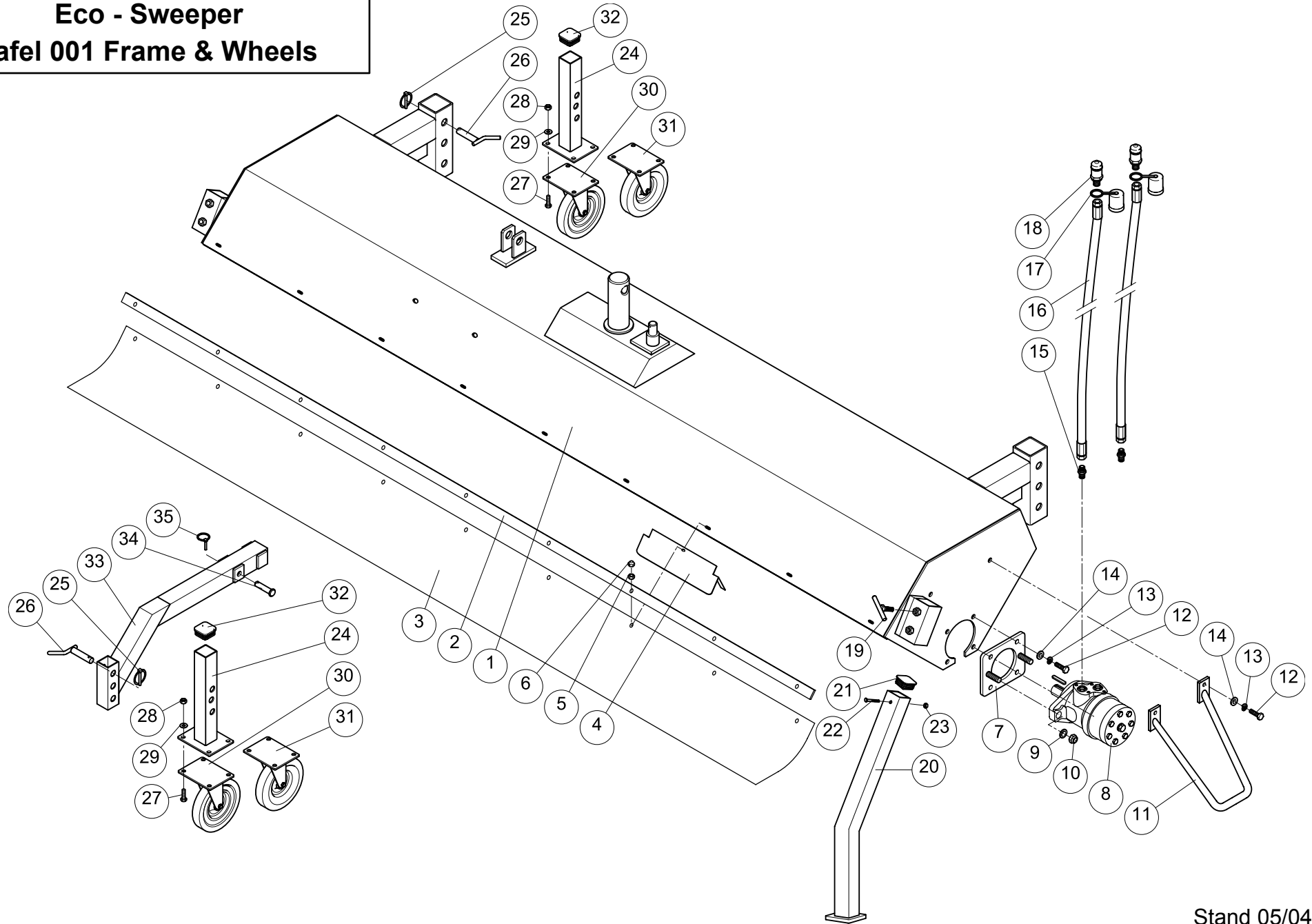


Stand 05/04

Eco Sweeper – Parts Catalogue 001: Frame & Wheels

Item	Part No.	Description	Number
8	00.EK.00049	Hydraulic Motor	1
	00.EK.00554	Seal Kit	
9	00.AC.00101	Split Washer	2
10	00.AB.00064	Hexagon Nut	2
11	93.04.1(0000	Protection Guard	1
12	00.AA.00095	Hexagonal Screw	6
13	00.AD.00041	Lock Washer	6
14	00.AC.00081	Split Washer	6
15	00.EE.00002	Straight Screw Connection	2
16	00.EP.00092	Hydraulic Hose	2
17	00.FV.00008	Dust Cap	2
18	00.ES.00100	SVC Plug	2
		Storage Support	
19	00.AA.01000	Capstan-Head Screw	2
20	35.08.S0200	Storage Support	2
21	00.FW.00021	Square-Pot	2
22	00.AA.00039	Hexagonal Screw	2
23	00.AB.00007	Hexagon Nut	2
		Gang Wheels	
24	35.08.A0000	Interior Pipe	2
25	00.AK.00056	Quick Lock Pin	2
26	35.24.R0010	Gang Wheel Pin	2
27	00.AA.00095	Hexagonal Screw	8
28	00.AB.00044	Hexagon Nut	8

Eco - Sweeper Tafel 001 Frame & Wheels

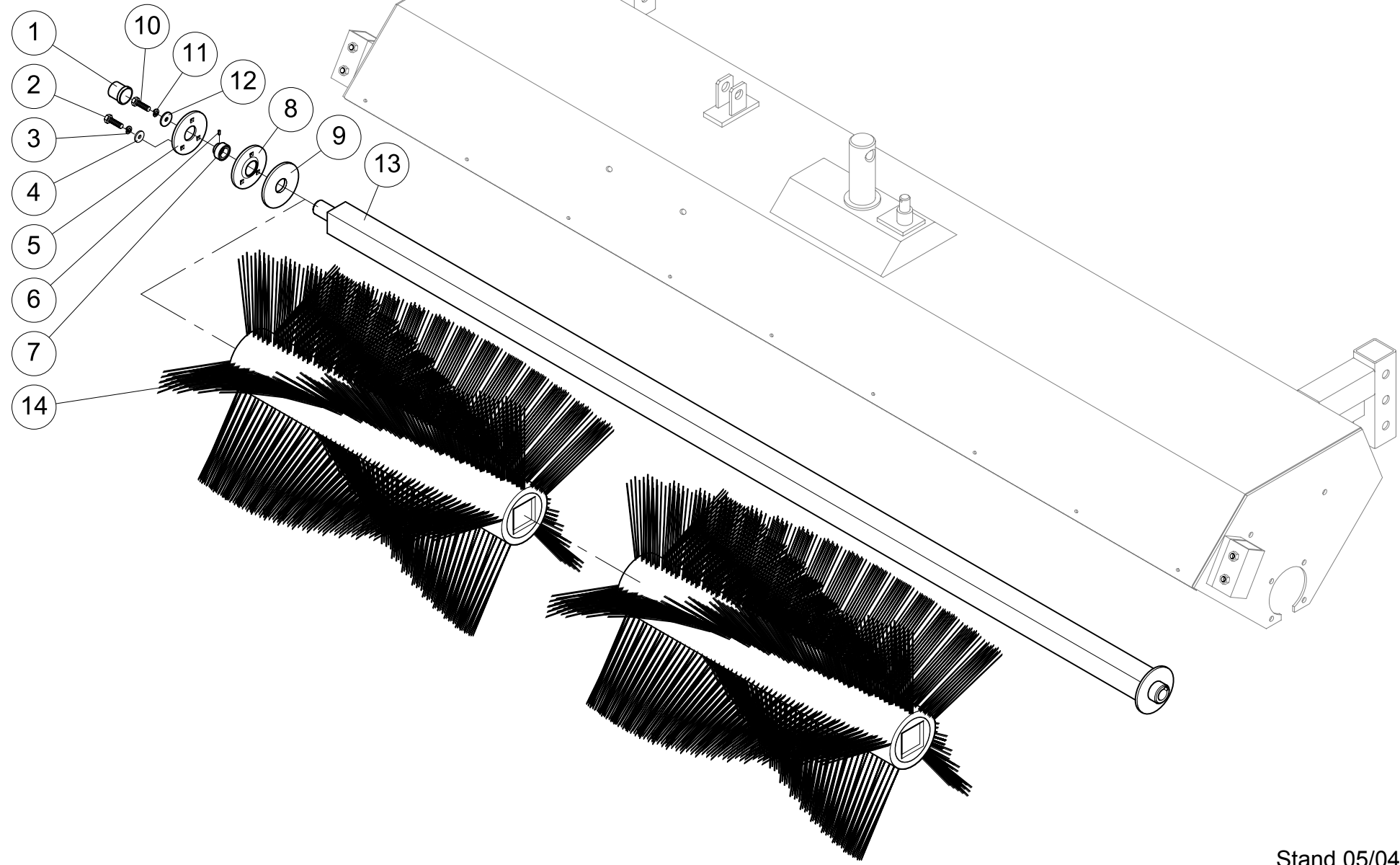


Stand 05/04

Eco Sweeper – Parts Catalogue 001: Frame & Wheels

Item	Part No.	Description	Number
29	00.AC.00081	Split Washer	8
30	00.LA.00020	Swivel Roller	2
31	00.LA.00005	Strengthened Swivel Roller	2
32	00.FW.00019	Rectangular Bung	2
		Gang Wheel	
33	35.24.R0025	Gang Wheel Arm	1
34	00.AH.00011	Pin	1
35	00.AK.00056	Quick Lock Pin	1
24	35.08.A0000	Interior Pipe	1
25	00.AK.00056	Quick Lock Pin	2
26	35.24.R0010	Gang Wheel Pin	1
27	00.AA.00095	Hexagonal Screw	4
28	00.AB.00044	Hexagon Nut	4
29	00.AC.00081	Split Washer	4
30	00.LA.00020	Swivel Roller	1
31	00.LA.00005	Strengthened Swivel Roller	1
32	00.FW.00019	Square-Bung	1

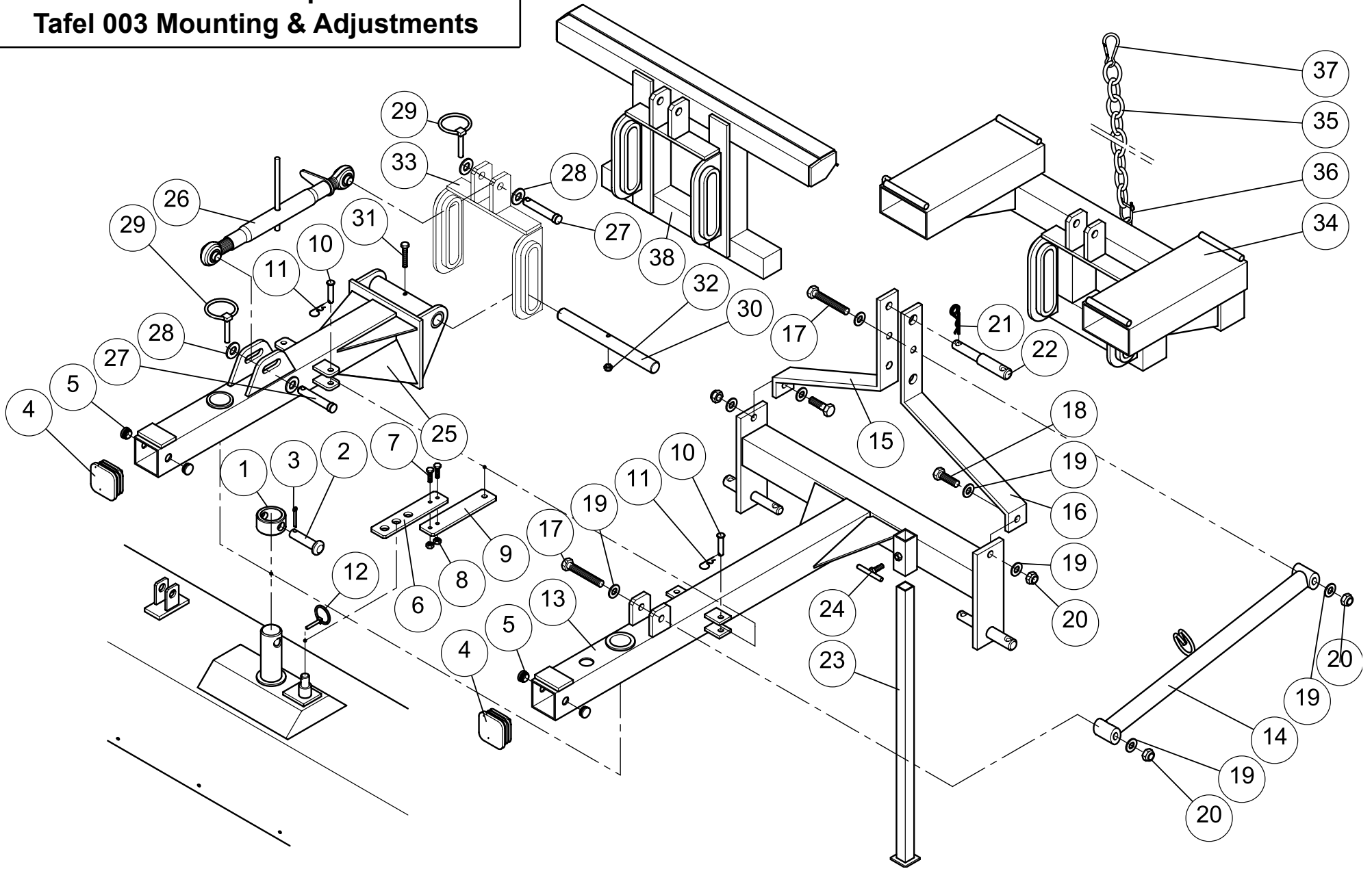
Eco - Sweeper
Tafel 002 Broom Assembly



Eco Sweeper – Parts Catalogue 002: Broom Assembly

Item	Part No.	Description	Number
1	00.FV.00002	Protector Cap	1
2	00.AA.00095	Hexagonal Screw	
3	00.AD.00041	Lock Washer	3
4	00.AC.00081	Split Washer	3
5	00.DF.00009	Bush	1
6	00.AE.00101	Grubscrew	2
7	00.DA.00005	Locating Bush	1
8	00.DF.00002	Bush	1
9	00.AC.00252	Flat Washer	1
10	00.AA.00095	Hexagonal Screw	3
11	00.AD.00041	Lock Washer	3
12	00.AC.00091	Flat Washer	3
		Working Width 1.50m	
13	35.04.P1050	Wave Form Brush, Eco 1.5m	1
14	00.MB.00023	Turning Roller	2
		Working Width 1.80m	
13	35.05.P1050	Wave Form Brush, Eco 1.8m	1
14	00.MB.00030	Turning Roller	2
		Working Width 2.30m	
13	35.08.P1050	Wave Form Brush, Eco 2.3m	1
14	00.MB.00023	Turning Roller	3

Eco - Sweeper Tafel 003 Mounting & Adjustments

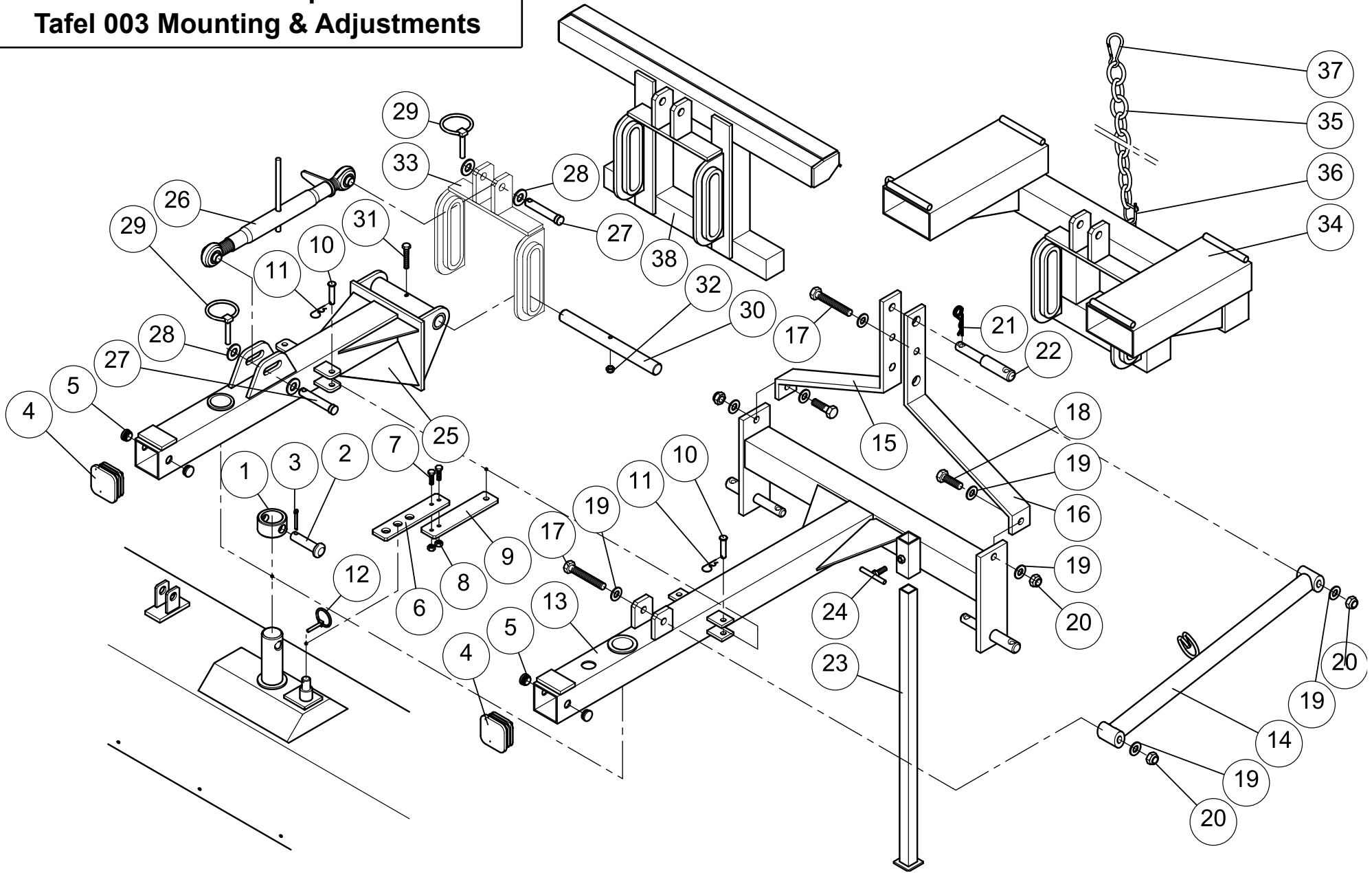


Stand 05/04

Eco Sweeper – Parts Catalogue 003: Mounting & Adjustments

Item	Part No.	Description	Number
1	92.58.Z0010	Locking Ring	1
2	00.AH.00011	Pin	1
3	00.AK.00023	Split Pin	1
4	00.FW.00077	Square Plugs	1
5	00.FW.00074	Plug	2
		<i>Items 4 and 5 are not applicable to the 3-gang wheel</i>	
		Mechanical Skew	
6	92.53.K0001	Inclining/Slanting Handle #1	1
7	00.AA.00004	Hexagonal Screw	2
8	00.AB.00024	Hexagon Nut	2
9	92.53.K0002	Inclining/Slanting Handle #2	1
10	00.AH.00026	Pin	1
11	00.JH.00001	Spring Cotter M. Double Feather/Spring	1
12	00.AK.00056	Quick Lock Pin	1
		Eco - Three Point Support	
13	35.53.10010	Three-point Support Arm	1
14	35.53.10030 -	Prop	1
15	35.53.10025	Centre Link Right	1
16	35.53.10026	Centre Link Left	1
17	00.AA.00159	Hexagonal Screw	2
18	00.AA.00214	Hexagonal Screw	2
19	00AC.00141	Split Washer	8
20	00.AB.00106	Hexagon Nut	4
21	00.JH.00003	Spring Cotter With Double Feather/Spring	1

Eco - Sweeper Tafel 003 Mounting & Adjustments

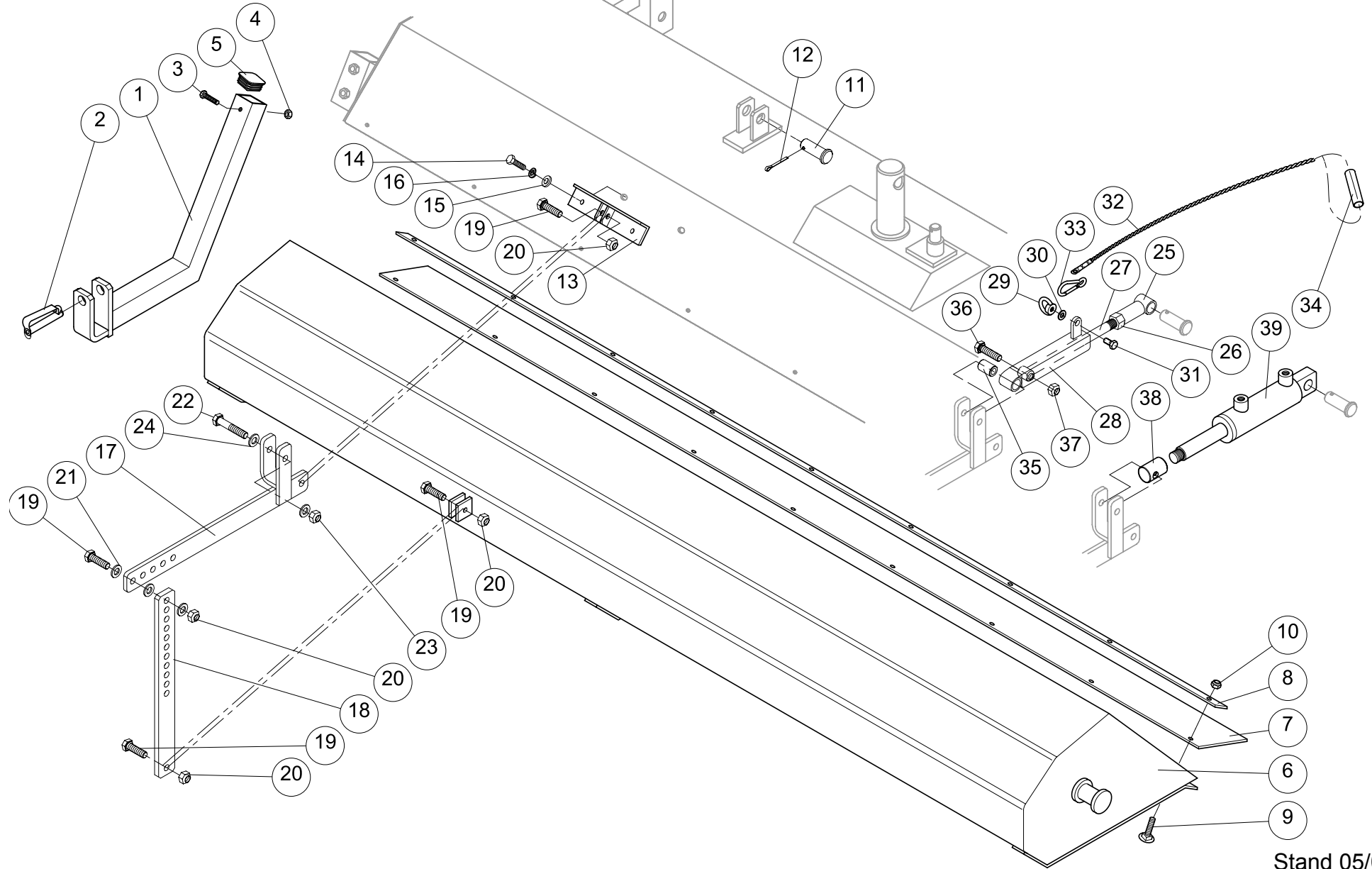


Stand 05/04

Eco Sweeper – Parts Catalogue 003: Mounting & Adjustments

Item	Part No.	Description	Number
22	00.AH.00016	Stage Pin	1
23	92.04.G0001	Storage Support	1
24	00.AA.01000	Capstan-Head Screw	1
		Eco - Mounting	
25	35.58.000025	Swivelling Arm	1
26	00.CA.00013	Centre Link Complete.	2
27	00.AH.00034	Centre Link Pin	1
28	00.AC.00181	Split Washer	4
29	00.AK.00059	Quick Lock Pin	2
30	35.58.00070	Pressing Rod	1
31	00.AA.00070	Hexagonal Screw	1
32	00.AB.00024	Hexagon Nut	1
33	38.58.00050	Level Control Entrance	(1)
		Eco - Fork Tine Entrance	
34	35.04.G0025	Fork Tine Entrance For 150x70	1
35	00.AK.00100	C-Chain	1
36	00.AS.00001	Shackle Form	1
37	00.UC.00002	Snap Hook	1
		Eco Yard Loader Entrance	
38	--	Yard Loader Entrance (Vehicle Dependent)	1

Eco - Sweeper Tafel 004 Collectors and Unloaders

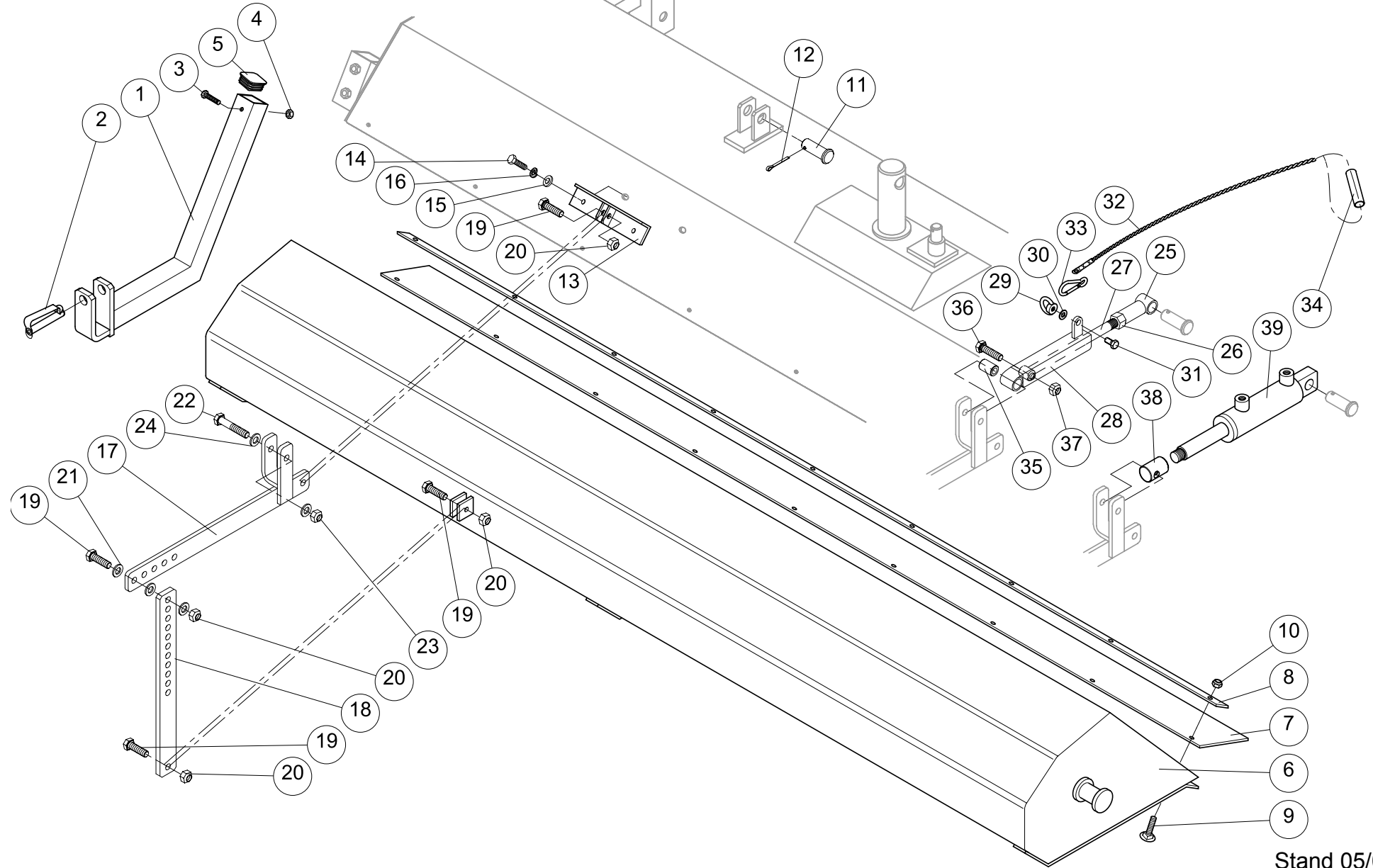


Stand 05/04

Eco Sweeper – Parts Catalogue 004: Collectors and Unloaders

Item	Part No.	Description	Number
1	35.38.E0000	Adjustment Arm	2
2	00.JG.00002	Spring Cotter Pin	2
3	00.AA.00039	Hexagonal Screw	2
4	00.AB.00007	Hexagon Nut	2
5	00.FW.00021	Square Plug	2
		Working Width 1.50m	
6	35.34.A0100	Collector	1
7	35.34.02001	Vulkollan Strip	1
8	35.34.00002	Impact Strip	1
9	00.AA.00020	Brazier Head Screw	11
10	00.AB.00200	Ratchet Nut	11
		Working Width 1.80m	
6	35.35.A0100	Collector	1
7	35.35.02001	Vulkollan Strip	1
8	35.35.00002	Impact Strip	1
9	00.AA.00020	Brazier Head Screw	10
10	00.AB.00200	Ratchet Nut	10
		Working Width 2.30m	
6	35.38.A0100	Collector	1
7	35.38.02001	Vulkollan Strip	1
8	35.38.00002	Impact Strip	1
9	00.AA.00020	Brazier Head Screw	11
10	00.AB.00200	Ratchet Nut	11

Eco - Sweeper Tafel 004 Collectors and Unloaders

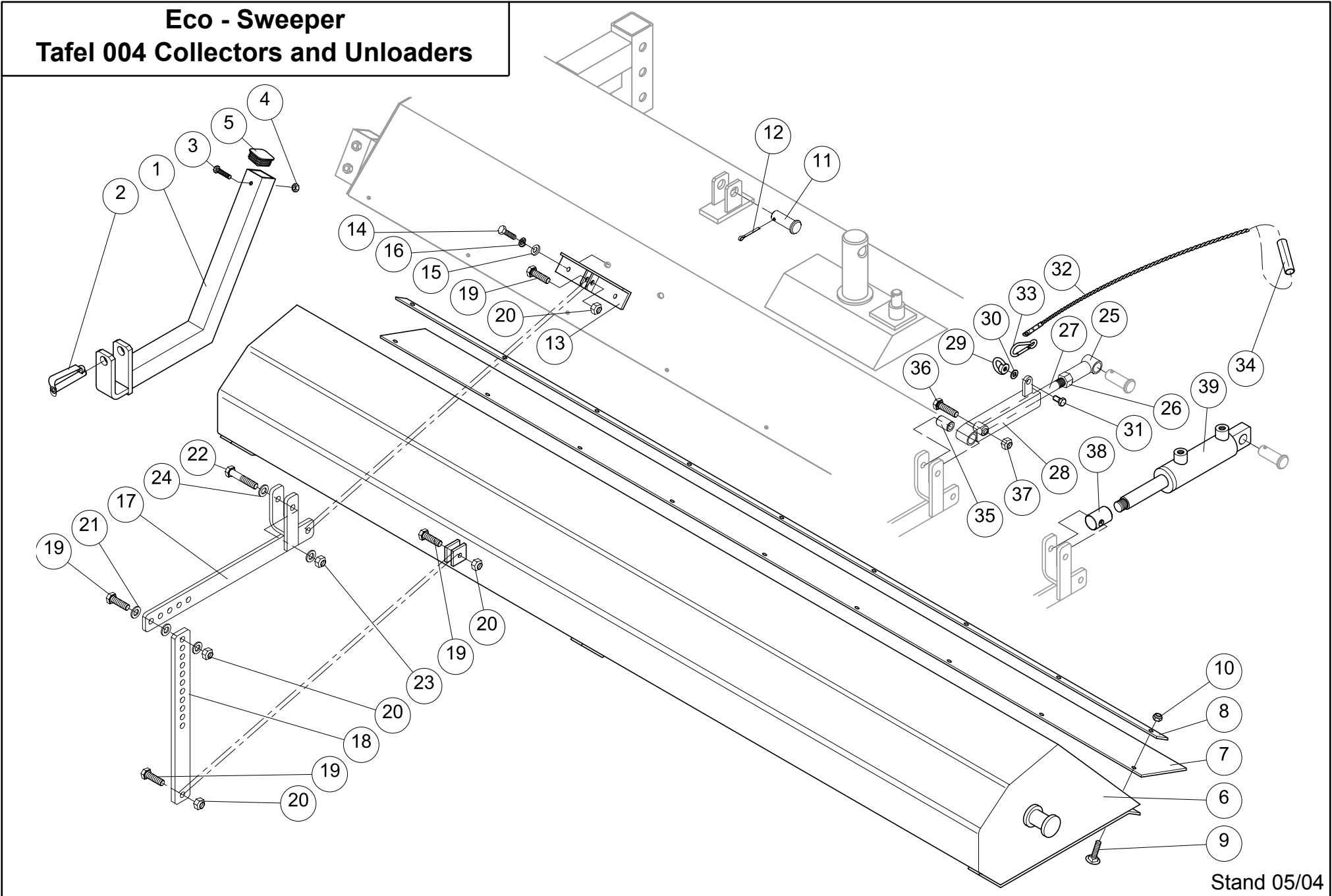


Stand 05/04

Eco Sweeper – Parts Catalogue 004: Collectors and Unloaders

Item	Part No.	Description	Number
		Hydraulic And Mechanical Unloaders	
11	00.AH.00014	Pin	1
12	00.AK.00023	Split Pin	1
13	92.34.D0000	Container Locking Keeper	1
14	00.AA.00097	Hexagonal Screw	2
15	00.AC.00081	Split Washer	2
16	00.AD.00041	Lock Washer	2
17	92.34.H0000	Upper Adjustment Bar	1
18	92.34.10000	Lower Adjustment Bar	1
19	00.AA.00140	Hexagonal Screw	4
20	00.AB.00064	Hexagon Nut	4
21	00.AC.00101	Split Washer	3
22	00.AA.00150	Hexagonal Screw	1
23	00.AB.00064	Hexagon Nut	1
24	00.AC.00101	Split Washer	2
		Mechanical Unloaders	
25	35.38.E0265	Threaded Joint	1
26	00.AB.00101	Hexagon Nut	1
27	35.38.E0260	Lever Linking Bolt	1
28	35.38.E0251	Folding Lever	1
29	00.AB.00027	Annular Nut	1
30	00.AC.00061	Split Washer	1
31	00.AA.00055	Hexagonal Screw	1
32	00:UB.00010	Cable With Terminators	1
33	00.UC.00003	Snap Hook	1

Eco - Sweeper Tafel 004 Collectors and Unloaders



Stand 05/04

Eco Sweeper – Parts Catalogue 004: Collectors and Unloaders

Item	Part No.	Description	Number
34	00.FO.00004	Handle	1
35	35.08.E0006	Inserting Socket	1
36	00.AA.00142	Hexagonal Screw	1
37	00.AB.00064	Hexagon Nut	1
		Hydraulic Unloaders	
38	92.22.A0100	Threaded Joint	1
39	00.EL.00001	Hydraulic Cylinder	1

Parts Catalogue

Notes:

Notes:



TUCHEL

MASCHINENBAU GmbH

Holsterfeld 15 • D-48499 Salzbergen
Tel.: +49 (0) 5971 9675 - 0 • Fax 9675 - 30
www.tuchel.com • E-Mail: info@tuchel.com
E-Mail for order parts: service@tuchel.com

